



# SERVICE BULLETIN

1/2

from: TRIO-KENWOOD COMMUNICATIONS, INC.

R-1000

#813 R

SUBJECT: R-1000 AGC, AM BANDWIDTH CHANGES

DATE 2/19/80

## AGC

To shorten the AM AGC time constant, C2, the AGC capacitor may be changed from the original 4.7uF, or simply delete C2 by clipping out the 4.7uF as supplied. Access to this component is by removing the top case. On early models, C2 is located behind the MODE switch, and on later models, is located on the RX unit as C138 adjacent to connector 13.

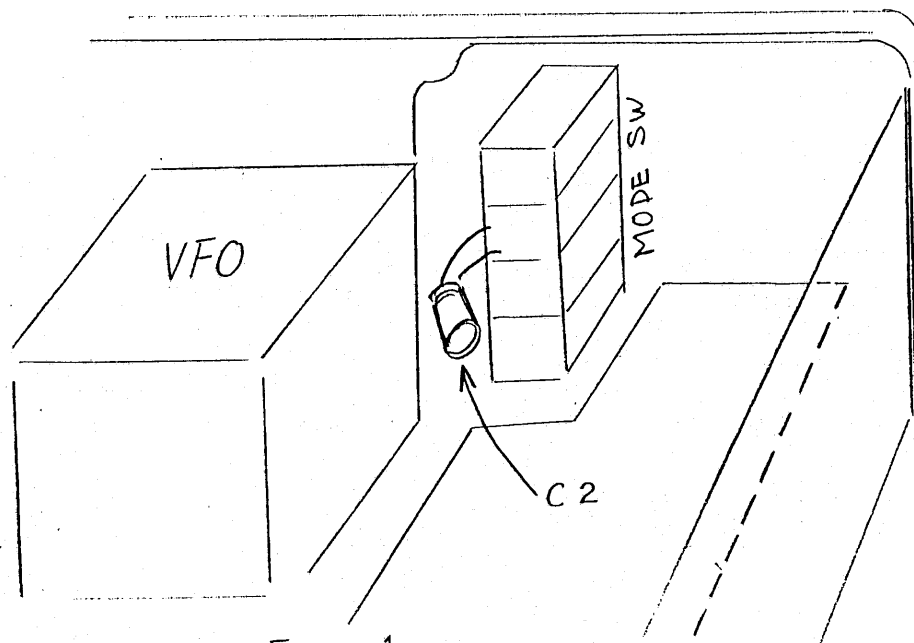


Fig - 1

## AM BANDWIDTH OPTIONAL WIRING

If you desire substituting the AM 6KHz filter in favor of the 12KHz for AM WIDE, and the 2.7KHz filter for AM narrow, install the optional BWK-1 connector kit (see reverse) in-line at connector 3 on the RX unit X55-1250-00

## 24 HR CLOCK

Contrary to popular rumor, the clock module IS NOT convertible to 24 hour format.

TRIO-KENWOOD  
COMMUNICATIONS, INC.1111 WEST WALNUT STREET - COMPTON, CALIFORNIA 90220  
MAILING: P.O. BOX 7065 - COMPTON, CALIFORNIA 90224

BWK-1

The BWK-1 is an optional AGC and Narrow bandwidth kit for early production R-1000 receivers. It allows using the SSB 2.7KHz filter for AM narrow, and includes a 1uF cap for shortening the AGC time constant. This kit includes instruction to fabricate and install the connector and to locate and replace the cap. This does require some technical ability.

This kit is for serial numbers before: 0030001-0051600 & 0060001-0060400 cap change and before serial numbers 010xxxx for selectivity. Later production has the 1uF cap, and internally slectable AM bandwidth.

Contents of this Kit:

1. Diode
1. Male connector 3 pin
1. Female connector 3 pin
2. Female connector pins
1. 1uF @ 16V (or greater) capacitor
1. instruction sheet

Additional Requirement

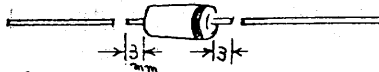
- 45 Watt or smaller sold-  
ering pencil.  
60/40 rosin core solder  
small cutting plier  
#2 philips screwdriver

INSTALLATION:

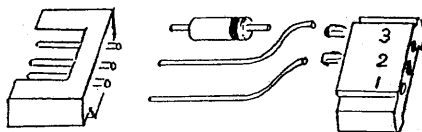
Install as outlined on the reverse side of the instruction. Disconnect power before opening the R-1000.

Connector fabrication READ BEFORE PROCEEDING

1. Cut the leads on the diode to approximately 3mm or 1/8 inch, and save the cut leads.



2. Lay the connectors, diode, leads and female connectors out just as pictured. Be sure the index on the diode and each connector is as shown:



3. Solder the diode and leads to the Female connector pins.
4. Insert the Female connector pins in the Female connector so the metal tabs lock into the plastic connector.



5. Solder the diode and leads to the Male connector. Fabrication is complete.

