

# 2020 NAVIGATION/MULTIMEDIA Receiver Firmware Update Guide

## Introduction

- This document describes the procedure and precautions for upgrading the 2020 NAVIGATION/MULTIMEDIA receiver firmware.
- If an error occurs while you are updating the firmware, the 2020 NAVIGATION/MULTIMEDIA receiver may become unusable. Be sure to read the following procedure and precautions carefully before updating the firmware.

## Target Model and Firmware Version

The updater can be used for the firmware versions of the models shown below.

Target models	Target firmware versions → Updated versions
DMX1057XR, DMX1037S	Ver. 1.3.0003.1100 or earlier → 1.4.0003.1100
DMX9720XDS, DMX9720XS	Ver. 1.3.0003.1200 or earlier → 1.4.0003.1200



- For how to check your firmware version, refer to "Checking the Firmware Version".

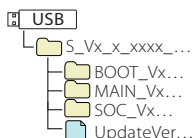
## Work Flow

- Download the firmware files, and copy them to USB memory.
- Update the firmware. **(It takes about 7 minutes.)**
- Check that the firmware has been updated.

## Creating the Update Media

Create the update media on your PC.

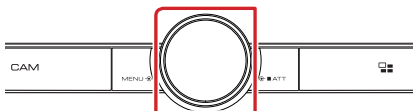
- Download the Updates from the Web site.
- Decompress the downloaded file.
- Copy the decompressed file to the top of hierarchy in USB memory.



- USB memory  
File system: FAT 16/32, NTFS, exFAT
- Do not copy the updater to a device containing audio files. Blank USB memory is highly recommended.
- Update cannot be performed if it is copied inside a folder.
- If the updater file name is changed, update cannot be performed.

## Checking the Firmware Version

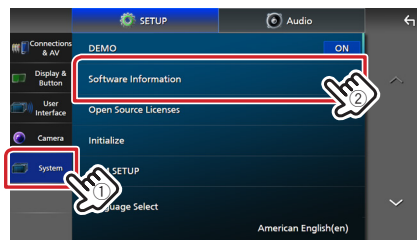
- Press the <MENU> button.



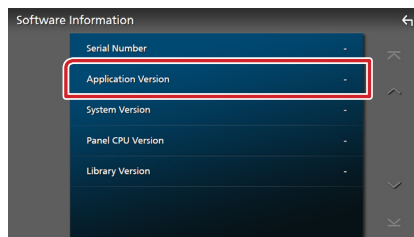
- Touch [SETUP].



- Touch [System].
- Touch [Software Information].

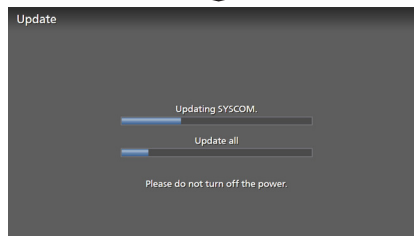
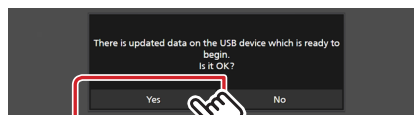


- Check the version.



## Updating the Program

- Connect the USB memory.  
The confirmation message appears.
- Touch [Yes] to update starts. (It takes about 7 minutes.)



**Caution:** The screen may go blank for a few seconds. Do not unplug the USB memory or Power Off the unit during the Update Procedure.

- System Reboot & Software Update Screens
- Once the "Update completed." screen is displayed, remove the USB memory.
- Check that the firmware version is updated, by referring to "Checking the Firmware Version".  
When "1.4.0003.xx00" is displayed, the firmware version is updated successfully.

## Precautions

- Update cannot be performed with other media.
- Be sure to park the vehicle in a safe place before updating. Keep the engine running in order to prevent battery from running out.
- Do not turn off the engine or Navigation/Multimedia receiver power while updating. Update cannot be performed correctly and the Navigation/Multimedia receiver may become unusable.