

KENWOOD



 **Trackuracy**
Indoor/Outdoor Positioning & Tracking

An aerial photograph of a large-scale mining operation, overlaid with a blue tint. The image shows a deep, terraced mine pit with several long conveyor belts crisscrossing the landscape, transporting material from the bottom of the pit to processing areas at the top. Several large dump trucks are visible on the ground, and a front loader is positioned near the bottom of the pit. The surrounding area includes some industrial buildings and dense vegetation on the right side.

Helping you get the right resources
to the right place at the right time.



Indoor/Outdoor Positioning & Tracking

With Trackuracy, you can improve safety by tracking assets within your buildings, across all your campus locations, and in between buildings. Even while taking to the road in company vehicles, your view switches seamlessly between indoor and outdoor tracking. Best of all, it happens within a single application.

In our fast-moving world, knowing the locations of the assets you rely on is critical. An integrated solution should work anywhere you need it to - indoors or outdoors. It's common for companies to use GPS to locate assets outdoors. However, satellite signals typically are not strong enough to penetrate the roof of a building or through walls to provide accurate information for indoor location. GPS is generally inadequate for precise indoor location, performs poorly in multilevel structures, and can quickly drain a device's battery. For in-building positioning, you need a solution that is designed specifically for this purpose.

You need Trackuracy, the Real Time Location System (RTLS) from JVCKENWOOD. Trackuracy integrates indoor and outdoor tracking with KENWOOD radio communication systems and provides the tools you need to secure your environment.

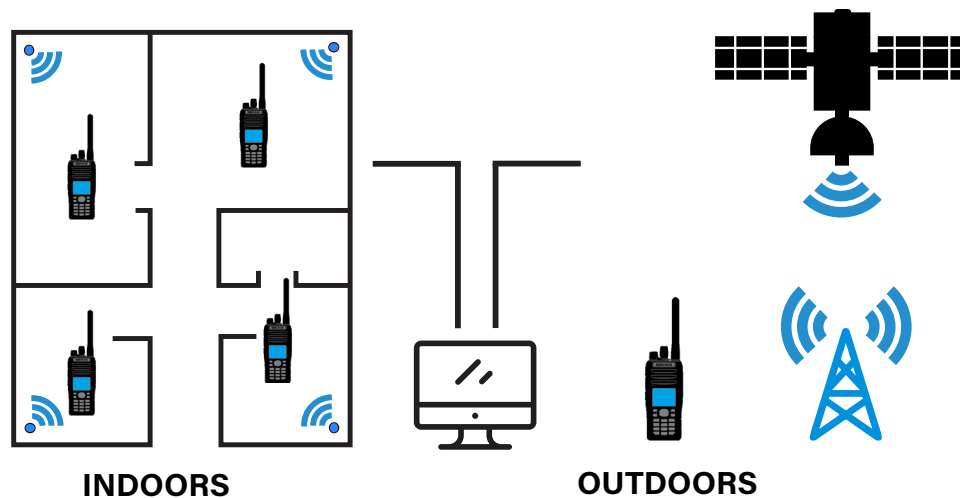
INTEGRATED TOOLS FOR INDOOR AND OUTDOOR TRACKING

GPS based tracking isn't new. Whether you call it AVL or Fleet Management - tools to understand where vehicles are in near-real-time have been around for years. What is new is integrating indoor tracking with outdoor tracking in a single, easy to use platform.

Trackuracy has standard outdoor functionality, such as alerts when assets approach a hazardous area. The system also comes with alerting and reporting built around speed limits and adds basic fleet maintenance tracking. The built-in tools allow users to track radio maintenance and repairs separate from their vehicle fleet.

REAL TIME LOCATION SYSTEM (RTLS)

An RTLS helps you get the correct resources to the right place at the right time - all visible to you as it happens. Real-time, live-action views, reporting and analytics with the ability to automate actions and notifications form the backbone of a Trackuracy system. The right mix of beacons and smart sensors, combined with GPS and the radio system you already have, enables simple, cost-effective real-time tracking, reporting, and recording of each asset's location and status. Trackuracy is available in different tiers, making your solution customizable for the level of performance your needs require.



FEATURES & BENEFITS

Trackuracy integrates indoor and outdoor functionality into simple-to-use tools, making it not just possible, but easy to solve big problems:

- Receive location information for all emergency calls
- Trace contacts and areas needing sanitization
- Increase productivity
- Shorten response times
- Document presence and responsiveness
- Reduce loss and liability
- Locate resources indoors
- Enhance worker safety
- Set up Response Team procedures and reporting rules
- Dynamically create a geo-fenced perimeter around an incident
- Visual awareness and integration with the radio emergency button and man-down features
- Allows you to assess response times and resources to drive operations

Trackuracy is enabling a prestigious ski resort in Mont Tremblant to not only improve their operations, but most importantly, the safety of their team members.

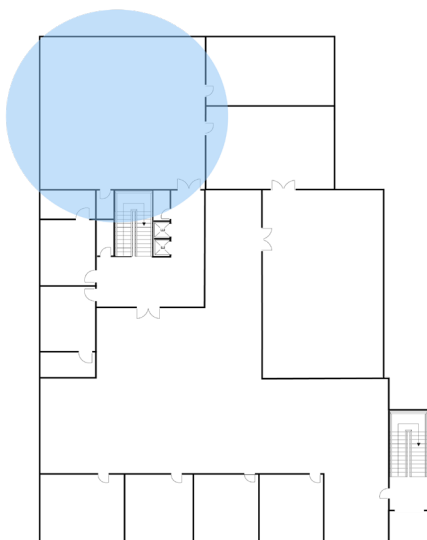
NEXT LEVEL WORKPLACE SAFETY & EFFICIENCY AT YOUR FINGERTIPS

- Build situational awareness of regular activity so that developing situations stand out
- Define critical areas and increase alert levels, even within IS and ATEX environments
- Have confidence in the last known location of workers
- Prepare the procedures, and set up response team and reporting rules for automatic notifications
- Receive location information with all emergency calls including Man Down
- Confirm the arrival of assistance on scene
- Access to historical data and analytics
- Automate actions based on location data

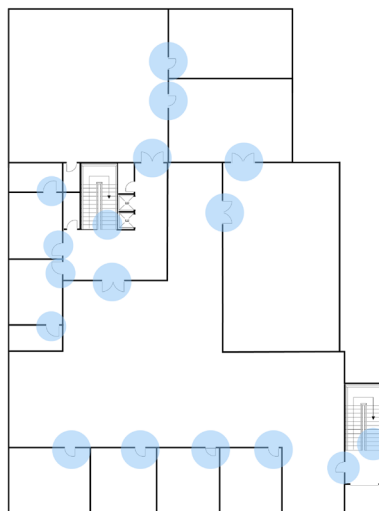
If operating in an Intrinsically Safe, or ATEX certified environment is one of your challenges, Trackuracy has a solution.

CUSTOMIZE YOUR COVERAGE

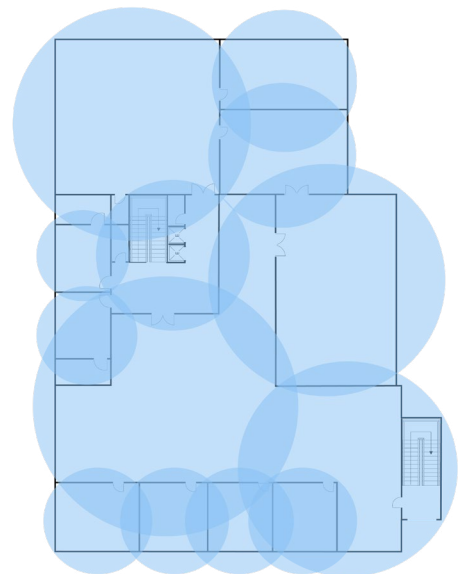
Tailor any tier of a Trackuracy system at the time of deployment to meet your needs and budget.



Areas of Interest



Entrances or Exits



Full Coverage

DIFFERENT MARKETS, DIFFERENT NEEDS

Trackuracy is a scalable solution with configurations for simple tracking, monitoring access to restricted areas, or a comprehensive solution to identify asset location across your campus. Trackuracy offers three tracking tiers to provide varying levels of accuracy and functionality.

		TIER 1	TIER 2	TIER 3
POSITIONING	Precision	Nearest beacon	3 meters	< 1 meter
	Style	Proximity	Proximity or full 2D	Proximity or full 2D
	Method	Radio Reports	Sensors Triangulate	Sensors Triangulate
	Updates	Interval or Event	Continuous	Continuous
	Geo-fencing	Basic	Basic & Advanced	Basic & Advanced
	Panic button	✓	✓	✓
	Jetstream*	✓		
RADIO MODES	DMR	✓	✓	✓
	NXDN	✓	✓	✓
	P25		✓	✓
TRACKING	Radios	✓	✓	
	Badges		✓	✓
	Assets		✓	✓
REPORTING	Data Export	✓	✓	✓
	Pre-defined	✓	✓	✓
	Custom		✓	✓
	Analytics			✓
	Customer System Integration			✓

*Jetstream can enable thousands of position updates per minute without requiring LTE or using radio system resources.



TURNKEY SOLUTIONS FROM KENWOOD

At JVCKENWOOD, we understand that our customers need turnkey solutions, not just equipment. We've leveraged customer feedback, our dealer network, and our own experience and expertise across many industries, to understand customer challenges and integrate our products and services with proven technologies. Trackuracy integrates indoor and outdoor tracking with KENWOOD radio communication systems and provides the tools you need to secure your environment. We have the resources to identify the optimum combination of equipment and software for your needs, so you get a better result as well as a single source for purchasing and support.



JVCKENWOOD Canada Inc.
6070 Kestrel Road
Mississauga, ON L5T1S8
trackuracy@ca.jvckenwood.com
www.ca.jvckenwood.com



11.22.2021