

# KENWOOD

## **AMG LASSO-DB update software** --- **INSTRUCTION MANUAL**

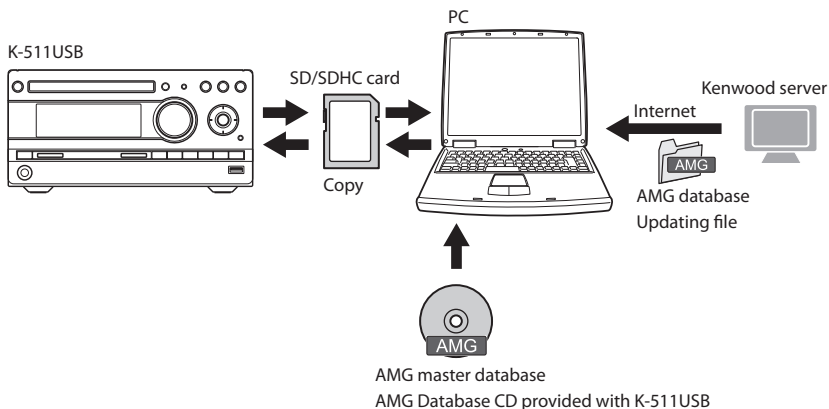
Kenwood Corporation



© 2009 All Media Guide, LLC  
Content and technology provided by All Media Guide®.

## General

The AMG LASSO-DB update software (hereafter referred to as "this software") updates the AMG database in your PC based on a database file downloaded from the Kenwood server. The updated database can be transferred (copied) into the SD/SDHC card used by K-511USB for use in obtaining the latest album title information.



## Operating Environment

The following environment is required to run this software. Make sure that your operating environment meets the following requirements before installing this software.

### PC

|                    |  |
|--------------------|--|
| Applicable models  | DOS/V machine (IBM PC/AT compatible) <sup>1</sup>  |
| OS                 | <ul style="list-style-type: none"> <li>• Microsoft Windows XP Home Edition/Professional SP2 or after (32-bit only)<sup>2</sup></li> <li>• Microsoft Windows Vista Ultimate/Business/Home Premium/Home Basic (32-bit/64-bit)<sup>2</sup></li> </ul> |
| CPU                | The environment recommended for the above OS or better   |
| Memory             | The environment recommended for the above OS or better   |
| Hard disk drive    | Available space of 2 GB or more  |
| Other requirements | <ul style="list-style-type: none"> <li>• Internet connection environment</li> <li>• CD-ROM drive</li> <li>• SD/SDHC card slot or SD/SDHC card reader/writer</li> <li>• Microsoft .NET Framework 2.0 or higher</li> </ul>                           |

<sup>1</sup>A model in which either OS listed below is preinstalled. The operation is not guaranteed for a user-assembled PC or a PC running an upgraded OS.

<sup>2</sup>When installing this software, log on the PC with the computer administrator account (such as "Administrator").

**SD/SDHC card**

|                    |  |
|--------------------|--|
| Card type          | <ul style="list-style-type: none"> <li>• SD memory card</li> <li>• SDHC memory card</li> </ul> |
| Transfer rate      | Class 4 or higher  |
| File system format | FAT16, FAT32   |
| Capacity           | 2 GB or more   |

**Trademark information**

Microsoft, Windows and .NET Framework are registered trademarks or trademarks of Microsoft Corporation in the United States and other countries.

Other system and product names are generally registered trademarks or trademarks of their respective owners. The ® and TM marks are omitted in the text of this manual.

**Important information**

It is strictly prohibited to duplicate, modify, make addition or otherwise alter the whole or part of this software. Kenwood will not assume any liabilities on the damage incurred by the user or a third party due to the use of this software.

For the purpose of improvement, the specifications of this software may be subject to change without notice.

## ***Installing the Software***

When installing this software, log on the PC with the computer administrator account (such as "Administrator").

- 1** After downloading, the "AMG LASSO-DB update software" file from the Kenwood website, double-click on the file icon and start installation following the instructions displayed on the PC screen.
- 2** When your OS runs Windows XP and does not have .NET Framework 2.0 installed in it, install .NET Framework 2.0 according to the displayed instruction and reboot the PC.
- 3** When the installation finishes, the "AMG LASSO-DB update software" shortcut icon will be created on your desktop.



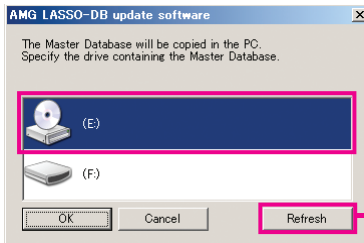
## Updating the Master Database

- 1 Double-click on the [AMG LASSO-DB update software] icon on the desktop. The main window of this software appears. See the main window description for details (page 6).

Memo • This software can also be launched by opening the Start menu and selecting [All Programs] → [KENWOOD] → [AMG LASSO-DB update software] → [AMG LASSO-DB update software].

- 2 Insert the AMG Database CD in the CD-ROM drive of the PC.

Use the AMG Database CD provided with K-511USB.

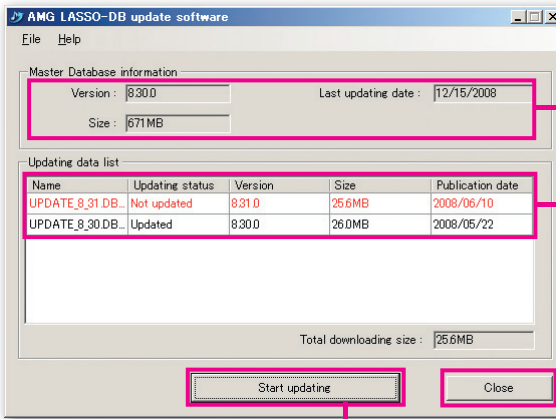


Select the drive containing the CD and click on the [OK] button.

The master database will be copied in the PC.

Updates the status information of the connected drives.

When the master database has been copied, the PC downloads the AMG database updating information from the Kenwood server automatically.



Master Database information

Updating data list

List of AMG database updating data files.

[Close] button

Closes the window and exits this software.

[Start updating] button

### "Updating status" information

Not updated: The database is neither downloaded nor updated.

Downloaded: The database has been downloaded.

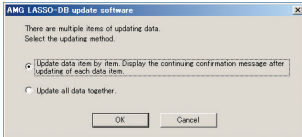
Updated: The database has been downloaded and updated.

### 3 Start updating the master database in the PC.



Click on the [Start updating] button in the window to start the database updating.

When there is more than one piece of updating information:



The window shown on the left appears after [Start updating] is selected. Select the updating method and click on the [OK] button.

- [Update data item by item. Display the continuing confirmation message after updating of each data item.]  
Confirms every piece of updating data before applying it in the database updating.
- [Update all data together.]  
Updates the database using all of the updating data.

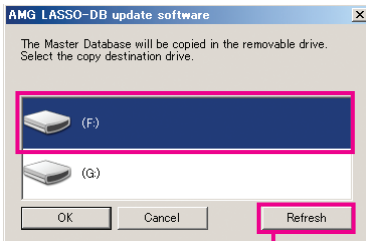
When the database has been updated, the window for copying the master database appears. Follow the displayed instructions to copy the master database in the SD/SDHC card.

Memo • Updating may take a long period depending on the type of the PC in use.

### 4 Insert an SD/SDHC card in the PC.

Insert the card in the SD/SDHC card slot of the PC or the SD/SDHC card reader/writer.

### 5 Copy the updated database in the SD/SDHC card.



Select the drive containing the SD/SDHC card and click on the [OK] button.

The updated master database will be copied in the SD/SDHC card.

When the [File Overwrite Confirmation] window appears, click on the [Yes] button to overwrite the existing database.

Updates the status information of the connected drives.

### 6 Click on the [Close] button to finish.

## Updating the Master Database For the Second and Subsequent Time

#### 1 Double-click on the [AMG LASSO-DB update software] icon on the desktop.

The main window of this software appears and the PC downloads the database updating information automatically.

#### 2 Click on the [Start updating] button.

Update the master database and copy it in the SD/SDHC card by following the displayed instructions.

# Main Window Description

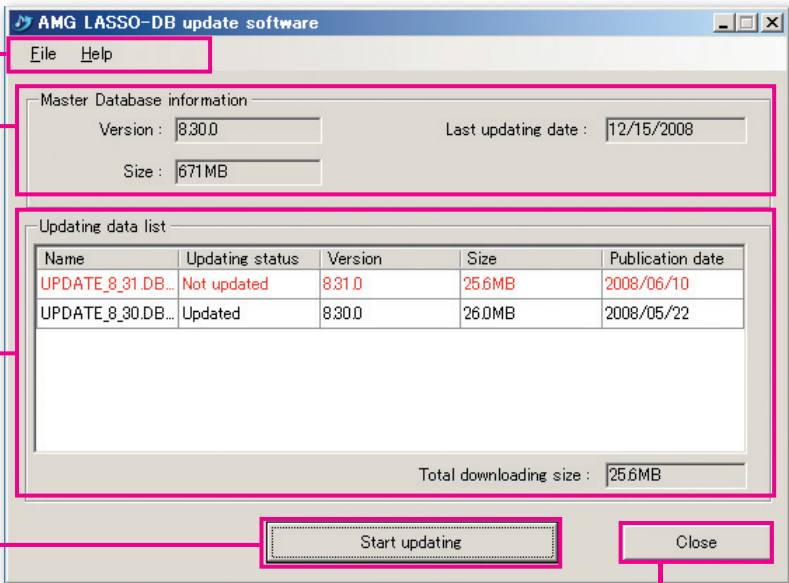
This software has the window and buttons as described in the following.

## Master Database information

Displays the information on the master database saved in the PC.

## Menu bar

Lists the main menus of this software.



## [Start updating] button

Downloads the updating data and updates the master database in the PC.

## [Close] button

Closes the window and exits this software.

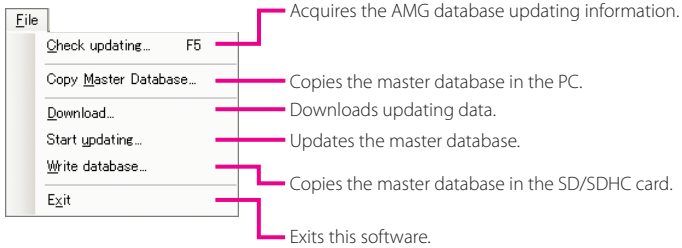
## Updating data list

List of database updating data files.

## Menu Description

### Using the [File] menu

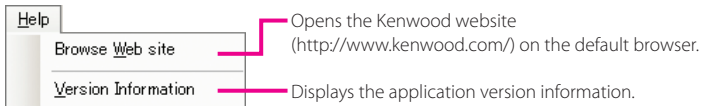
This menu offers the submenus for use in control of this software. The provided functions include the updating check and downloading functions.



**Memo** • When a drive (SD/SDHC card slot or card reader/writer) is selected in [Copy Master Database] in the [File] menu, the AMG database in the SD/SDHC card can be copied in the PC.

### Using the [Help] menu

This menu offers information on the Kenwood website and the software version information.



## Deleting This Software

When deleting this software, log on with the computer administrator account.

- 1 Open the Start menu and select opening the Start menu and select [All Programs] → [KENWOOD] → [AMG LASSO-DB update software] → [Uninstall AMG LASSO-DB update software].

Follow the displayed instructions to delete the software.

This software as well as all of the databases will be deleted from the PC.

- Memo** • When the OS is Windows XP:  
This software can also be deleted using [Add or Remove Programs] in the Control Panel.
- When the OS is Windows Vista:  
This software can also be deleted using [Uninstall Programs] in the Control Panel.

## Troubleshooting

### Errors displayed during master database copying

| Symptom  | Remedy   | See page |
|--|--|----------|
| Cannot find the Master Database. Check that the selected drive contains the Master Database. | <ul style="list-style-type: none"><li>• Prepare the AMG Database CD provided with K-511USB or an SD/SDHC card containing a copy of the AMG database.</li></ul> | 4        |
| Drive xx does not have sufficient capacity. Increase the available capacity.                 | <ul style="list-style-type: none"><li>• The PC's hard disk drive does not have enough idle space. Reserve the idle space.</li></ul>                            | 4        |

### Errors displayed during updating information acquisition

| Symptom  | Remedy   | See page |
|--|--|----------|
| Not connected to the network. Please check connection. | <ul style="list-style-type: none"><li>• Make the PC ready for the Internet connection.</li></ul>   | 4        |
| Acquisition of updating information failed.            | <ul style="list-style-type: none"><li>• Make the PC ready for the Internet connection.</li><li>• If the data cannot be acquired though the PC is connected to the Internet, retry acquisition.</li></ul> | 4        |

### Errors during updating data downloading

| Symptom  | Remedy  | See page |
|--|---|----------|
| Not connected to the network. Please check connection. | <ul style="list-style-type: none"><li>• Make the PC ready for the Internet connection.</li></ul>  | 5        |
| Downloading failed.                                    | <ul style="list-style-type: none"><li>• If the data cannot be acquired though the PC is connected to the Internet, retry acquisition.</li></ul> | 5        |

### Errors displayed during database updating

| Symptom  | Remedy  | See page |
|--|---|----------|
| Not connected to the network. Please check connection.                       | <ul style="list-style-type: none"><li>• Make the PC ready for the Internet connection.</li></ul>                                    | 5        |
| Drive xx does not have sufficient capacity. Increase the available capacity. | <ul style="list-style-type: none"><li>• The PC's hard disk drive does not have enough idle space. Reserve the idle space.</li></ul> | 5        |

### Errors displayed during database writing

| Symptom  | Remedy  | See page |
|--|---|----------|
| There is no available removable drive. Connect to the PC and retry.          | <ul style="list-style-type: none"><li>• Insert a writable SD/SDHC card in the SD/SDHC card slot or SD/SDHC card reader/writer.</li></ul>        | 5        |
| Drive xx does not have sufficient capacity. Increase the available capacity. | <ul style="list-style-type: none"><li>• The SD/SDHC card does not have enough idle space. Use an SD/SDHC card with enough idle space.</li></ul> | 5        |
| The selected removable drive uses a non-supported file system.               | <ul style="list-style-type: none"><li>• Use an SD/SDHC card formatted in the FAT16 or FAT32 format.</li></ul>                                   | 5        |