

Bluetooth Module Firmware Update Procedure

Precautions

- **Update file is different by model. Refer to <Connected Navigation/Multimedia receiver> in <Target Models> for the models which update is necessary.**
- Be sure to park the vehicle in a safe place before updating. Keep the engine running in order to prevent battery from running out.
- Do not turn off the engine or Navigation/Multimedia receiver power while updating. Update cannot be performed correctly and the Navigation/Multimedia receiver may become unusable.

Note: Please be advised that the settings on Your Navigation/Multimedia receiver will be cleared further to completing the update, i.e. Paired Phones, User Settings, Voice Tags.

Introduction

- This document describes the procedure and precautions for upgrading the KCA-BT200 Bluetooth Module firmware to conform to your cell-phone.
- If an error occurs while updating the firmware, the KCA-BT200 Bluetooth Module may become unusable. Be sure to read the following procedure and precautions carefully before updating the firmware.

Checking the Firmware of the Cell-phone

Make sure that the connecting cell-phone model is in [Supported Cell-phone Model List].
If you can use your cell-phone without problems at the moment, you need not update the firmware.

Target Models

This updater can be used to update the firmware of the following models.

KCA-BT200

Connected Navigation/Multimedia receiver

DDX5022, DDX5022Y, DDX5032, DDX5032M, DDX512, DDX52RY, DDX7032, DDX7032M, DDX712, DNX5120, DNX512EX, DNX5220, DNX7120, DNX7220, DNX7320, KVT-50DVDRY, KVT-512, KVT-522DVD, KVT-522VDY, KVT-532DVD, KVT-532DVDM, DNX7320CN

Work Flow

Preparation	Check the firmware version and the connecting cell-phone model to check whether firmware update is required.
Step1	Download the firmware update file and the update tool, and then install the update tool.
Step2	Initiate Your Navigation/Multimedia receiver for the Update Process.
Step3	Start the update tool and transfer the update file.
Step4	Check that the firmware has been updated.

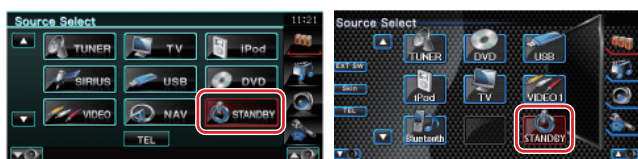
Checking the Firmware Version

1 Display the Source Select screen

Press the [SRC] button.

2 Select the STANDBY

Press the [STANDBY] button.



3 Enter Setup Menu

Press the [SETUP] button.



4 Display the Software Information screen

Press the [Software Information] button.



5 The firmware version appears



Step1: Before You Get Started

You need the following items:

- PC with Bluetooth capability or a Bluetooth USB dongle.
- Update tool "Parrot Software Update Tool" (Downloadable from the Kenwood website).
- Bluetooth Module Firmware Update file (Downloadable from the Kenwood website).

Note: The Bluetooth Dongle can be a general purpose USB Bluetooth device and does not need to be brand specific.

1 Downloading the "Parrot Software Update Tool"

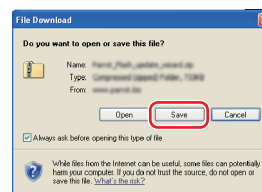
Please copy and paste the following link:

<http://www.kenwood.com/bt/support/groupF/eng.html>

Select [► Download].

The "Parrot Software Update Wizard" can be downloaded.

Select [Save] to save it on the Desktop of your PC.



System Recommendation:

The Parrot Software Update Tool requires Windows XP, Service Package 2 to run.

2 Downloading the Bluetooth Firmware Update File

Select [► Download].

Select [Save] to save it on the Desktop of your PC.

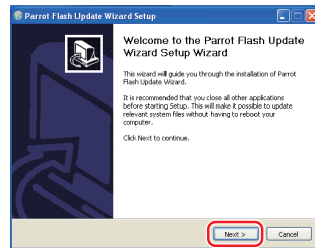
Bluetooth Module Firmware Update Procedure

3 Install the Software Update Wizard

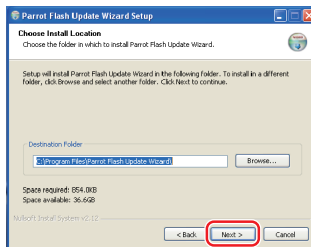
3-1 You will find "BT-Updater.exe" then, double click it.



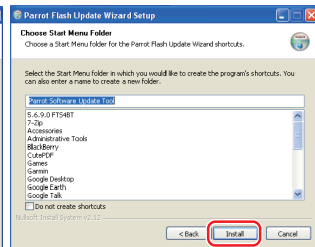
3-2 Select [Next].



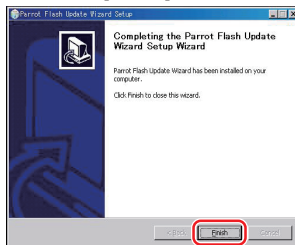
3-3 Select [Next].



3-4 Select [Install].



3-5 Select [Finish].



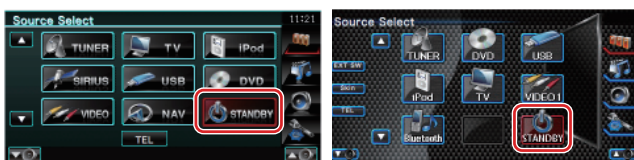
Step2: Initiate Your Navigation/Multimedia receiver for the Update Process

1 Display the Source Select screen

Press the [SRC] button.

2 Select the STANDBY

Press the [STANDBY] button.



3 Enter Setup Menu

Press the [SETUP] button.

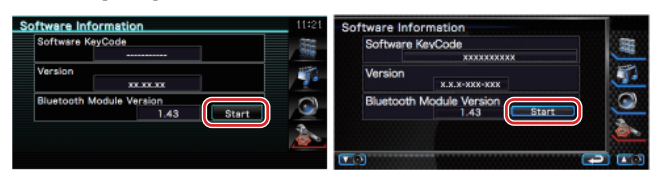


4 Display the Software Information screen

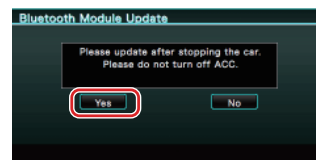


5 Open Bluetooth Firmware Update

Press the [Start] button.



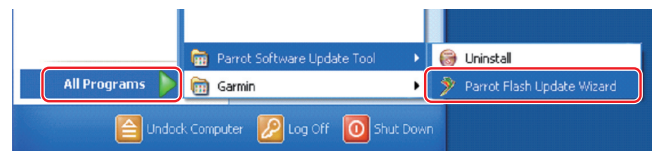
Press the [Yes] button.



"WAITING" is displayed.

Step3: Launching the Software Update Tool

The Parrot Software Update Wizard will likely be located in [All Programs] under the [Start] button on the bottom left of your PC screen.



1 Launch the Parrot Update Wizard

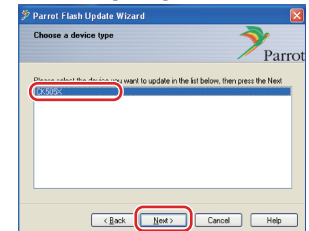
Select [Start] > [All Programs] > [Parrot Software Update Tool] > [Parrot Flash Update Wizard].

2 Select a file as instructed on the screen

2-1 Select [Next].

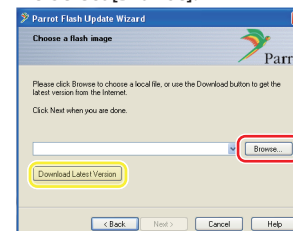


2-2 Select [Next].



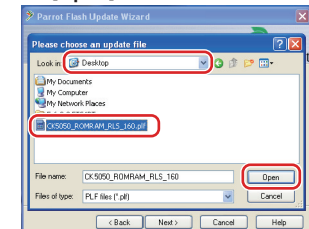
Note: CK505X will be the only item. If it is not highlighted, then highlight it and select [Next].

2-3 Select [Browse].



Caution: Do not press [Download Latest Version].

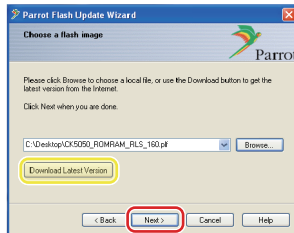
2-4 Select [Desktop] from Drop-Down menu. Select <CK5050_ROMRAM_RLS_***.plf>, and then select [Open].



Note: "****" in the file name indicates the firmware version.

Bluetooth Module Firmware Update Procedure

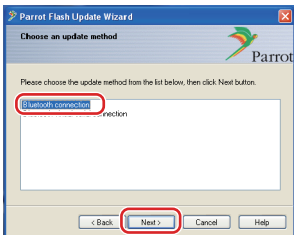
2-5 Select [Next].



Caution: Do not press [Download Latest Version].

3 Choose the Update Method

Highlight the “Bluetooth connection” option, then select [Next].



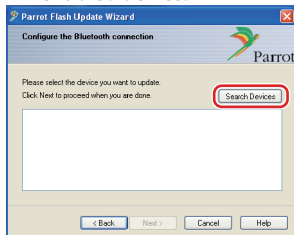
If your PC is Bluetooth compatible or you have a Bluetooth dongle plugged into your computer, the screen on the left will be displayed.

Note: If this screen is not displayed, refer to the Troubleshooting Section in page 4.

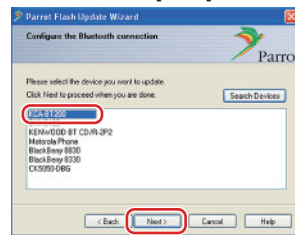
Caution: Do not select the “Bluetooth virtual serial connection” option.

4 Searching for the Kenwood Audio Product to Update

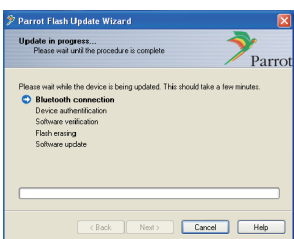
4-1 Select [Search Devices] to display a list of Bluetooth-enabled device.



4-2 Select <KCA-BT200>, and then Select [Next].

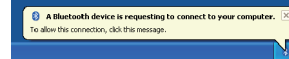


5 Establishing the Bluetooth Connection

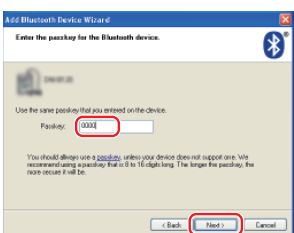


After Selecting the [Next] button the screen shown to the left will be displayed.

Click on the pop-up message that is displayed at the bottom right of your PC screen. Be sure to click the message portion; do not close it.



6 Entering the Passkey (PIN)



This prompt screen will be automatically displayed on the PC to enter the Passkey.

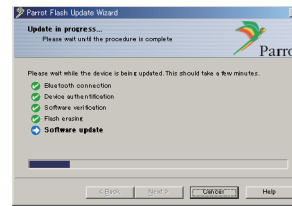
Note 1: This is the same PIN you used to pair your cell-phone with your Navigation/Multimedia receiver. If you did not initiate a personal PIN, you can use the default. Default setting = “0000” or “1234”.

Note 2: If an Error occurs after entering the PIN, verify the PIN in the Bluetooth Menu Screen.

Note: Refer to the Troubleshooting Instructions.

Note: This Update Process will take approximately 2 – 3 minutes. Do not Power Off the unit during the Update Procedure.

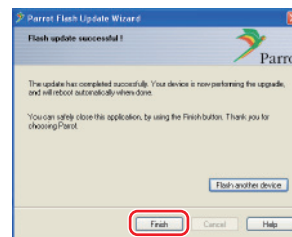
7 Update in Progress screen



“Updating” is displayed on the Navigation/Multimedia receiver.

8 Flash Update Successful Screens

Select [Finish] to close the Parrot Software Update Wizard.



Note: The updating process on your Kenwood unit may take several minutes to complete even after you have finished the Flash Update process.

9 Complete the Firmware Update

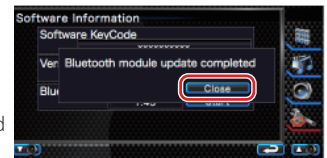
Restart the Navigation/Multimedia Receiver

In about 30 seconds, “Updating” is displayed.

And then, the receiver is restarted automatically.

Wait until the receiver is restarted completely (about 70 seconds).

Exit Bluetooth Firmware update Press the [Close] button.



Caution: PIN code is changed to “0000”. Set the PIN code again at “PIN EDIT” / “PIN Code Edit” in the Menu.

If “Updating” is still displayed even after 4 minutes, please perform following steps.

1. Ignition off.
2. Wait more than 20 seconds.
3. Ignition on.
4. Wait more than 90 seconds.
5. Check that the firmware has been updated.

Caution: PIN code is changed to “1234”. Set the PIN code again at “PIN EDIT” / “PIN Code Edit” in the Menu.

Step4: Verify the Bluetooth Firmware Version

Verify that the Firmware Version has been updated successfully in the Kenwood unit.

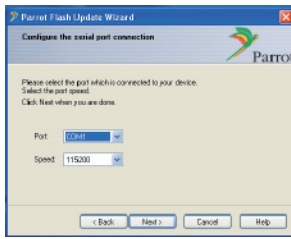
Refer to <Checking the Firmware Version> (page 1).

Your Kenwood unit now includes the necessary firmware version.

Bluetooth Module Firmware Update Procedure

Troubleshooting Instructions

Connection Errors



If the Bluetooth dongle is not plugged in, the screen to the left will be displayed.

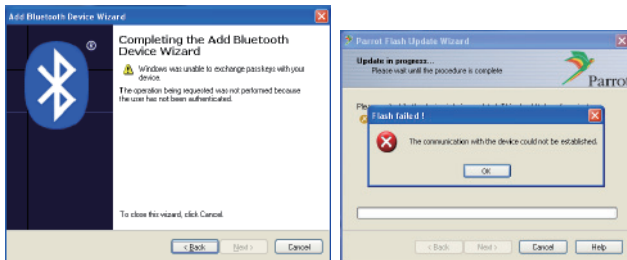
Make sure that the dongle is plugged in and working properly.

If you mistakenly selected "Bluetooth virtual serial connection" in the "Choose the update method" section, this screen will also be displayed.

Press the [Back] button.

(Refer to <Choose the Update Method> in page 3.)

Passkey (PIN) Error



If you enter the wrong Passkey (PIN) or wait too long before entering the Passkey (PIN), a communication error will be displayed.

Press the [OK] button on the "Error Message", and then press the [Back] buttons on the "Add Bluetooth Device Wizard" and the "Parrot Flash Update Wizard" screen. Repeat the procedures accordingly. (See <Entering the Passkey (PIN)> section in page 3.)

Bluetooth Connection Error

If you already have 5 devices paired with Your Kenwood Audio Product, you will not be able to connect via Bluetooth from your PC.

Please delete one of the devices from the Bluetooth Paired Devices list on the Kenwood unit.

Phone Connection Failure

If you are unable to connect your phone to your Kenwood product after the firmware update, delete the Kenwood unit in the Bluetooth phone menu and redo the Pairing Process. (Refer to your cell-phone manufacturer's Instruction Manual.)