

# Bluetooth Module Firmware Update Procedure

## Precautions

- **Update file is different by model. Refer to <Connected Control Unit> in <Target Models> for the models which update is necessary.**
- Be sure to park the vehicle in a safe place before updating. Keep the engine running in order to prevent battery from running out.
- Do not turn off the engine or CD receiver power while updating. Update cannot be performed correctly and the CD receiver may become unusable.

**Note:** Please be advised that the settings on Your Kenwood Audio Product will be cleared further to completing the Software Update, i.e. Paired Phones, User Settings, Voice Tags.

## Introduction

- This document describes the procedure and precautions for upgrading the KCA-BT200 Bluetooth Module firmware.
- If an error occurs while updating the firmware, the KCA-BT200 Bluetooth Module may become unusable.  
Be sure to read the following procedure and precautions carefully before updating the firmware.

## Checking the Firmware of the Cell-phone

Make sure that the connecting cell-phone is in [Supported Cell-phone Model List].

If you can use your cell-phone without problems at the moment, you need not update the firmware.

## Target Firmware

This updater can be used to update the following firmware version:

Ver 1.43 or earlier

To check the firmware version, refer to "Checking the Firmware Version" below for information on how to check the firmware version.

By executing this updater, the firmware version will become "Ver. 1.60".

## Target Models

This updater can be used to update the firmware of the following models.

KCA-BT200

### Connected Control Unit

#### Group E-1

DNX210EX, DPX-MP2090U, DPX-MP2100, DPX-MP3110, DPX-MP3110S, DPX-MP4110, DPX-MP4110S, DPX-MP5100U, DPX-MP5110U, DPX-MP7090U, DPX302, DPX501, DPX501U, DPX502, DPX502U, DPX701, DPX701U, KDC-MP2035, KDC-MP235, KDC-MP238, KDC-MP3035, KDC-MP335, KDC-MP338, KDC-MP4036AX, KDC-MP4039, KDC-MP408U, KDC-MP438U, KDC-MP439, KDC-MP5033U, KDC-MP5039U, KDC-MP532U, KDC-MP5539U, KDC-MP6036, KDC-MP632U, KDC-MP832U, KDC-W3537, KDC-W3537A, KDC-W3537AY, KDC-W3537G, KDC-W3537GY, KDC-W3541A, KDC-W3541AY, KDC-W3541G, KDC-W3541GY, KDC-W4037, KDC-W4037Y, KDC-W4041A, KDC-W4041G, KDC-W4041W, KDC-W4141AY, KDC-W4141GY, KDC-W4141WY, KDC-W5041UA, KDC-W5041UG, KDC-W5137, KDC-W5137Y, KDC-W5141U, KDC-W5141UAY, KDC-W5141UGY, KDC-W5534U, KDC-W5541U, KDC-W5641UY, KDC-W6534U, KDC-W7534U, KDC-W7534UY, KDC-X492, KDC-X590, KDC-X7533U, KDC-X890, KDC-X9533U, KDV-412, KDV-5234, KDV-MP6333, KDV-MP6433

#### Group E-2

KDC-MP4036U, KDC-MP435U, KDC-MP5036U, KDC-MP535U, KDC-W4537U, KDC-W4537UA, KDC-W4537UAY, KDC-W4537UG, KDC-W4537UGY, KDC-W4737U, KDC-W4737UY, KDC-W6537U, KDC-W6537UY, KDC-X491, KDC-X591

#### Group E-3

KDC-MP635, KDC-MP735U, KDC-W7037, KDC-W7037Y, KDC-W7537U, KDC-W7537UY, KDC-W9537U, KDC-W9537UY, KDC-X7006, KDC-X7006U, KDC-X791, KDC-X8006U, KDC-X891, KDC-X9006U, KDC-X991

## Work Flow

Preparation	Check the firmware version and cell phone to check whether firmware update is required.
Step1	Download the firmware update file and an update tool, and then install the update tool.
Step2	Initiate Your Kenwood Audio Product for the Update Process
Step3	Start the update tool and transfer the update file.
Step4	Check that the firmware has been updated.

## Checking the Firmware Version

### 1 Select the STANDBY

Press the [SRC] button.

Select the "STANDBY" display.

### 2 Enter Menu mode

E-1: Press the [MENU] button for at least 1 second.

E-2: Press the [MENU] button.

E-3: Press the [FNC] button. Turn the Control knob to select "MENU", and then press the Control knob.

"MENU" is displayed.

### 3 Select Bluetooth device selection mode

Push the Control knob towards up or down.

Select the "Phone Selection"/ "PHONE SEL"/ "PHN-SEL" display.

### 4 Enter the selected Bluetooth device selection mode

Press the Control knob for at least 1 second.

### 5 Select the KCA-BT200 Firmware

Push the Control knob towards up or down.

Select the "BT200 FW \*\*\*\*" display.

### 6 Exit the Bluetooth device selection mode

E-1/E-2: Press the [MENU] button.

E-3: Press the [FNC] button.

## Step1: Before You Get Started

In order to perform the Bluetooth Module Firmware Update, you must download the "Parrot Software Update Wizard" and save it to your PC.

You will also need the following items to perform the Firmware Update:

1. PC with Bluetooth capability or a Bluetooth USB dongle.
2. Parrot Software Update Wizard (Downloadable Application from the Kenwood website).
3. The Bluetooth Module Firmware Update (Downloadable from the Kenwood website).

**Note:** The Bluetooth Dongle can be a general purpose USB Bluetooth device and does not need to be brand specific.

### 1 Downloading the Software Update Wizard

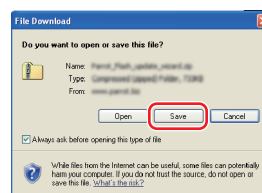
Please copy and paste the following link:

<http://www.kenwood.com/bt/support/143to160/groupE/eng.html>

Select [► Download] of Step1-1.

The "Parrot Software Update Wizard" can be downloaded.

Select [Save] to save it on the Desktop of your PC.



#### System Recommendation:

The Parrot Software Update Wizard requires Windows XP, Service Package 2 to run.

**Note:** The Parrot Software Update Wizard is only available for Windows systems.

# Bluetooth Module Firmware Update Procedure

## 2 Downloading the Bluetooth Firmware Update File

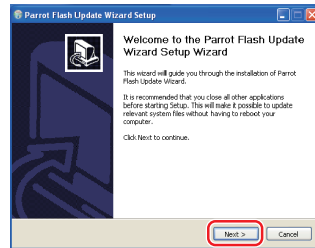
Select [►] Download] of Step1-2.  
Select [Save] to save it on the Desktop of your PC.

## 3 Install the Software Update Wizard

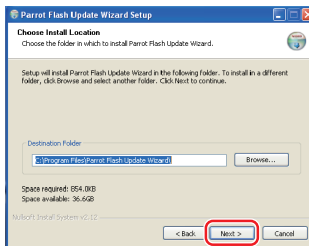
3-1 You will find "BT-Updater.exe" then, double click it.



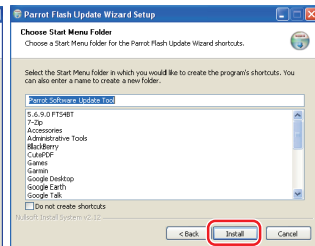
3-2 Select [Next].



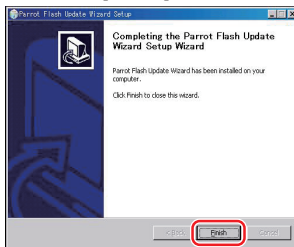
3-3 Select [Next].



3-4 Select [Install].



3-5 Select [Finish].



## Step2: Initiate Your Kenwood Audio Product for the Update Process

### 1 Select the STANDBY

Press the [SRC] button.  
Select the "STANDBY" display.

### 2 Enter Menu mode

E-1: Press the [MENU] button for at least 1 second.  
E-2: Press the [MENU] button.  
E-3: Press the [FNC] button. Turn the Control knob to select "MENU", and then press the Control knob.  
"MENU" is displayed.

### 3 Select Bluetooth device selection mode

Push the Control knob towards up or down.  
Select the "Phone Selection"/ "PHONE SEL"/ "PHN-SEL" display.

### 4 Enter the selected Bluetooth device selection mode

Press the Control knob for at least 1 second.

### 5 Select the KCA-BT200 Firmware

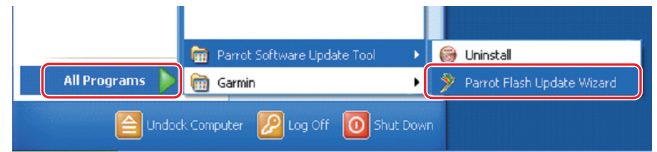
Push the Control knob towards up or down.  
Select the "BT200 FW \*\*\*\*" display.

### 6 Open Bluetooth Firmware update

Push the Control knob towards right or left.  
Then "\*" (asterisk) will be displayed next to "BT200 FW143"

## Step3: Launching the Software Update Tool

The Parrot Software Update Wizard will likely be located in [All Programs] under the [Start] button on the bottom left of your PC screen.

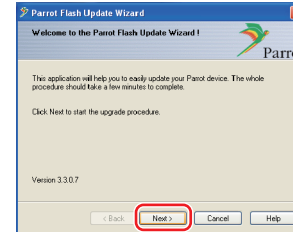


### 1 Launch the Parrot Update Wizard

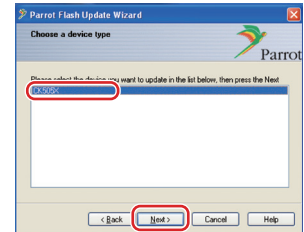
Select [Start] > [All Programs] > [Parrot Software Update Tool] > [Parrot Flash Update Wizard].

### 2 Select a file as instructed on the screen

2-1 Select [Next].

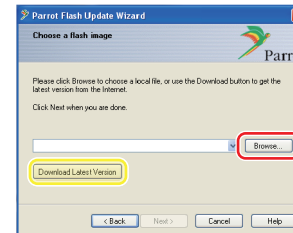


2-2 Select [Next].



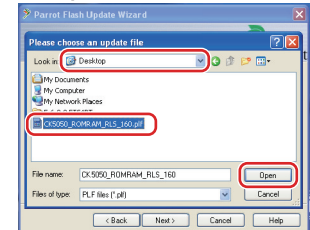
**Note:** CK505X will be the only item. If it is not highlighted, then highlight it and select [Next].

2-3 Select [Browse].



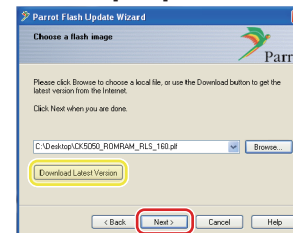
**Note:** Do not press [Download Latest Version].

2-4 Select [Desktop] from Drop-Down menu. Highlight the Update File then select [Open].



**Caution:** Select <CK5050\_ROMRAM\_RLS\_160.plf>

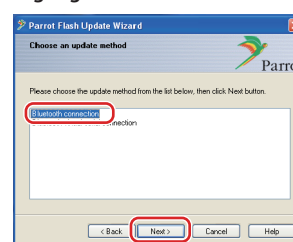
2-5 Select [Next].



**Note:** Do not press [Download Latest Version].

### 3 Choose the Update Method

Highlight the "Bluetooth connection" option, then select [Next].



If your PC is Bluetooth compatible or you have a Bluetooth dongle plugged into your computer, the screen on the left will be displayed.

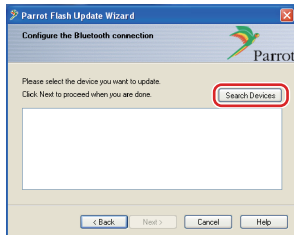
**Note:** If this screen is not displayed, refer to the Troubleshooting Section in page 3.

**Caution:** Do not select the "Bluetooth virtual serial connection" option.

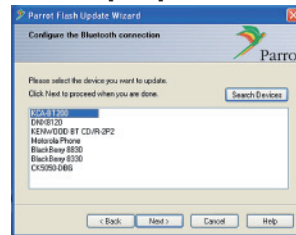
# Bluetooth Module Firmware Update Procedure

## 4 Searching for the Kenwood Audio Product to Update

4-1 Select [Search Devices] to display a list of Bluetooth-enabled device.

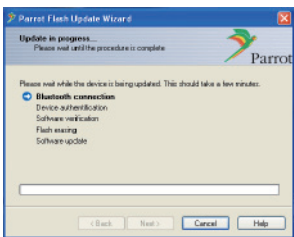


4-2 Highlight the product to be updated from the list, then Select [Next].



Select <KCA-BT200>.

## 5 Establishing the Bluetooth Connection

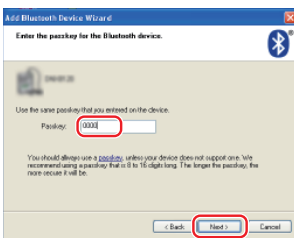


After Selecting the [Next] button the screen shown to the left will be displayed.

Click on the pop-up message that is displayed at the bottom right of your PC screen. Be sure to click the message portion; do not close it.



## 6 Entering the Passkey (PIN)



This prompt screen will be automatically displayed on the PC to enter the Passkey.

**Note 1:** This is the same PIN you used to pair your phone with your Kenwood Audio Product. If you did not initiate a personal PIN, you can use the default.

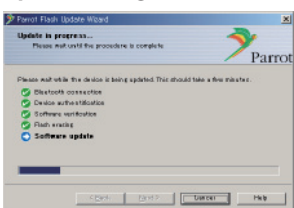
Default setting = 0000.

**Note 2:** If an Error occurs after entering the PIN, verify the PIN in the Bluetooth Menu Screen.

**Note:** Refer to the Troubleshooting Instructions.

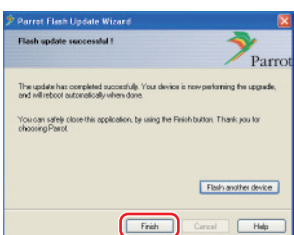
**Note:** This Update Process will take approximately 2 – 3 minutes. Do not Power Off the unit during the Update Procedure.

## 7 Update in Progress screen



## 8 Flash Update Successful Screens

Select [Finish] to close the Parrot Software Update Wizard.



**Note:** The updating process on your Kenwood unit may take several minutes to complete even after you have finished the Flash Update process.

## 9 Exit Bluetooth Firmware update mode of CD receiver

“DOWNLOAD”/“Downloading” is displayed, and then it changes to “NO ENTRY”. (It takes about 30 seconds.)

After that, “COMPLETE”/“Completed” is displayed, and then it changes to “BT200 FW”. (It takes about 70 seconds.)

E-1/E-2: Press the [MENU] button.

E-3: Press the [FNC] button.

## Step4: Verify the Bluetooth Firmware Update

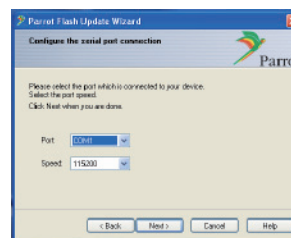
Verify that Firmware Version 1.60 has been updated successfully in the Kenwood unit.

Refer to <Checking the Firmware Version> (page 1).

Your Kenwood unit now includes the necessary firmware update.

## Troubleshooting Instructions

### Connection Errors



If the Bluetooth dongle is not plugged in, the screen to the left will be displayed.

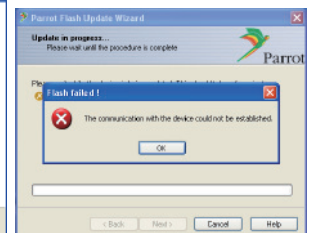
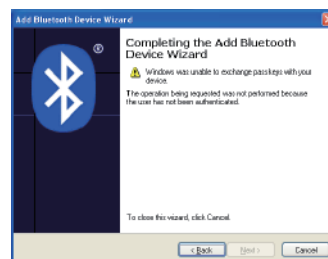
Make sure that the dongle is plugged in and working properly.

If you mistakenly selected “Bluetooth virtual serial connection” in the “Choose the update method” section, this screen will also be displayed.

Press the [Back] button.

(Refer to <Choose the Update Method> in page 3.)

### Passkey (PIN) Error



If you enter the wrong Passkey (PIN) or wait too long before entering the Passkey (PIN), a communication error will be displayed.

Press the [OK] button on the “Error Message” and then press the [Back] buttons on the “Add Bluetooth Device Wizard” and the “Parrot Flash Update Wizard” screen. Repeat the procedures accordingly. (See <Entering the Passkey (PIN)> section in page 3.)

### Bluetooth Connection Error

If you already have 5 devices paired with Your Kenwood Audio Product, you will not be able to connect via Bluetooth from your PC.

Please delete one of the devices from the Bluetooth Paired Devices list on the Kenwood unit.

### Phone Connection Failure

If you are unable to connect your phone to your Kenwood product after the Software Update, delete the Kenwood unit in the Bluetooth phone menu and redo the Pairing Process. (Refer to your cell phone manufacturer’s Instruction Manual.)